



Swallowcliffe P-6

Be Safe, Be Kind, Work Hard

Welcome to our Newsletter

Term 1, Week 9 2024

Pictured: B7R2 – Harmony Day



Diary Dates

Term 1

Week 9

Thursday 28/3 - Pupil Free Day

Friday 29/3 - Public Holiday (Good Friday)

Week 10

Monday 1/4 - Public Holiday (Easter Monday)

Thursday 4/4 - Primary PE Fun Day

Friday 5/4 - JP PE Fun Day

Week 11

Friday 12/4 - Last day of Term 1 (Early dismissal 2:00pm)

Term 2

Week 1

Monday 29/4 - Pupil Free Day

Tuesday 30/4 - First day of Term 2 for students

Week 2

Wednesday 8/5 - EID Celebrations

Key Contacts

Penney Sweeney – Principal
Eleanor Rawson – Deputy Principal
Elly Currin – Senior Leader
Dominic Stevens – Senior Leader
Erica Goodfellow – Co-ordinator
Kylie Holmes – Co-ordinator
Lisa Watkins – Co-ordinator
Tatum Finlay – Lead Teacher, Preschool

Principal's Message

It was fantastic to see so many students and staff wearing orange for Harmony Day. We celebrated it with activities in classes and an assembly, to celebrate our diversity as a school. Thanks to the Harmony Day committee for organising the day for us.

Parents/Carers are encouraged to use established lines of communication with their child's class teacher, using Seesaw. This is an app you can have on your phone. Please see your child's class teacher if you haven't already done this. We also have communication request forms from the front office that can be filled out for appropriate staff members to respond to.

Just a reminder of the upcoming Pupil Free Days;

- Thursday 28th March 2024
- Monday 29th April 2024 - First day of Term 2.

The staff wish all our families a happy and safe Easter break.

Penny Sweeney, Principal



B4R5 - Learning Intention

Learning Intention: students are learning to develop one to one correspondence.

B4R5 students have been practising counting by touching and moving objects, counting and crossing off objects. Students are using dice to roll, count and write numbers on game boards, collaborating with peers.



Swallowcliffe P-6 is committed to providing Quality Education.

Our Mission: To empower students to recognise and optimise their full learning potential through explicit teaching of;

- ✓ High Expectations
- ✓ Positive & Growth Mindset
- ✓ Relationships with Others

Principal: Penny Sweeney • Swallowcliffe Road, Davoren Park SA 5113

Ph: 8255 2908 • Fax: 8287 0559 • E: dl.1062.info@schools.sa.edu.au



Government of South Australia
Department for Education



www.swallowc7.sa.edu.au

Finance

2024 School Card

Eligibility for School Card Assistance is dependent upon the combined family gross income for the 2022/2023 financial year being within the following School Card limits:

Number of Dependant Children	Gross Annual School Card Income Limit	Gross Weekly School Card Income Limit
1 child	\$70,994	\$1,365
2 children	\$72,262	\$1,390
3 children	\$73,530	\$1,414
4 children	\$74,798	\$1,439
5 children	\$76,066	\$1,463
more than 5 children	Add \$1,268 for each dependent child	Add \$25 for each dependent child

School Card does not roll over year after year; you are required to apply each school year. If eligible for School Card the entire 2024 M&S charge of \$262.00 will be paid and a further \$25.00 can be accessed to purchase uniforms or pay for excursions in 2024.

Forms are available from the front office or you can apply online at www.sa.gov.au/education/schoolcard

Charlene Warrington
Business Manager

APPLYING FOR A SCHOOL CARD



All types of School Card applications are now online.

You can access the online forms from any device that gets internet, including mobile devices, such as tablets and smart phones, as well as laptops and computers.

Applying online is easy! Simply follow the steps below.

- STEP 1** Visit sa.gov.au/education/schoolcard
- STEP 2** Select the type of School Card you would like to apply for (for example 'Type A') and follow the prompts.
- STEP 3** Complete all mandatory fields.
Please note: you cannot submit your application unless all mandatory fields are complete.
- STEP 4** Once you have completed a page click on the 'NEXT' button.
- STEP 5** Once you have filled out all pages click the 'SUBMIT' button.
Please note: if you exit the form without clicking 'SUBMIT' your details will be lost.

You can save the form, and return to complete it at another time, by clicking on the 'SAVE' button.



sa.gov.au/education/schoolcard



Did you move or change phone number?

Parents are asked to keep the school up to date with contact details, changes of address and telephone numbers, any changes in a student's medical condition, and any change to the student's family situation.

In order for staff to care for your child, it is important we have current details of all contact numbers for parents/caregivers and an emergency contact if parents are unable to be contacted. We also require current information on any medical conditions.



Child Protection Curriculum

Keeping Safe: Child Protection Curriculum

KS: CPC



Keeping Safe: Child Protection Curriculum 2021 V2.1

- EY - 6 +Disability and additional needs

Miss Nicola will be teaching the Child Protection Curriculum across most of the R-6 classes in 2024

Term 1 focus is on The Right to be Safe

Focus areas

1. Feelings
2. Being safe
3. Warning Signs
4. Pressure and Manipulation



Everybody has the right to feel safe at all times!

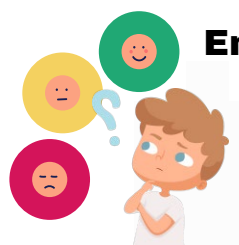


Swallowcliffe School

Emotional Literacy Focus

The current emotion is **Gratitude**

This has been an interesting emotion to discover and the primary students have started a Gratitude Journal in which they have started to reflect on some of the things they are truly grateful for.

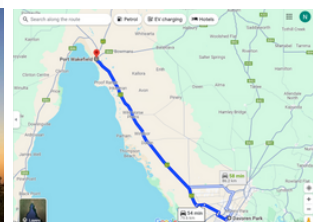


Health Curriculum Units

Miss Nicola will be teaching the Health Units across most of the R-6 classes in 2024

Uluru Virtual Run update...

All primary classes have had at least one session of running, some have had three. Most classes are nearing the 80km mark which places them in the vicinity of Pt Wakefield. Good job team!



Block 4 Art Hub

The Reception classes in Block 4 have turned their hub space into an 'Art Hub'. We have worked together to create different art pieces to showcase to our block visitors.



B7R1 - Classroom Work

This term we read the book *Let's Get a Pup*. We were able to 'adopt' our own toy pups for the term and look after them as if they were real pups.



START SCHOOL IN JULY!

THE NEW MID-YEAR INTAKE TO RECEPTION STARTS IN 2024.



STARTING PRIMARY SCHOOL

In South Australia, the first year of primary school is called reception.

- From 2024, children who turn 5 years old:
- before 1 May can start school in term 1
 - between 1 May and 31 October can start school in term 3 (mid-year intake)
 - after 31 October can start the next year.

Children who start school at the beginning of the year will complete 4 terms of reception.

Children who start school in a mid-year intake will complete 6 terms of reception.



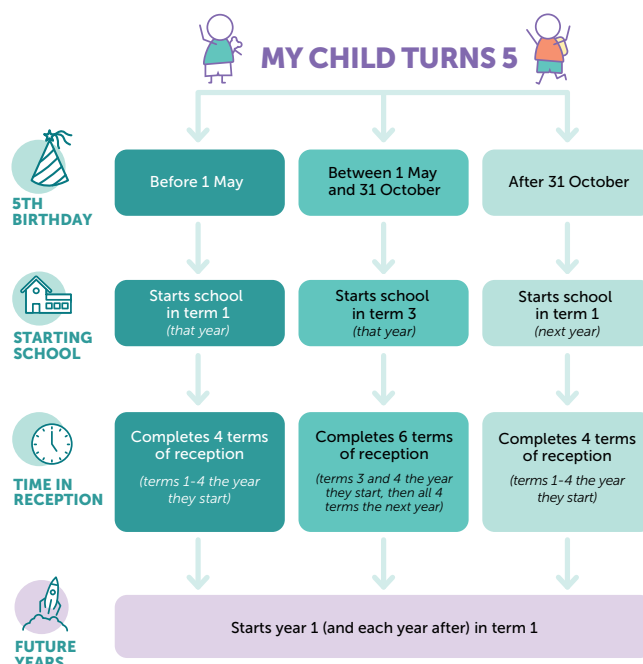
REGISTER YOUR INTEREST FOR 2024

Registrations of interest are now open to start school in the 2024 mid-year intake.



For more information visit www.education.sa.gov.au/primary-school-enrolment

START SCHOOL IN JULY!



Preschool News

Dear Preschool families,

At Preschool, we have been developing our knowledge of what words, letters and sentences look like through our Literacy Program called Pre-Lit. The children have enjoyed focusing on our book called *Dear Zoo* by Rod Campbell, which has sparked their interest in animals. The children have enjoyed exploring zoo animals through role play, running games, gluing activities, small world play, sensory play, reading animal books, scavenger hunts and puzzle play.

In our Kids in the Kitchen Program, we have been exploring 'Eat A Rainbow' which focuses on different coloured fruits and vegetables. We have been specifically looking at the colours red and orange. The children were invited to bring along red and orange fruit or vegetables to share on a platter for afternoon snack time. The children have been practising independently cutting the produce into pieces ready to share. The children have loved using their senses of smell, sight and taste to explore lots of new and familiar produce. Please remember, our Kids in the Kitchen Program is run entirely on donations from families, and without these donations we will be unable to conduct this program. If you would like to contribute to our Kids in the Kitchen Program, please see a Preschool educator.

As the weather has continued to remain warm, the children have also loved engaging in water play activities. They have been using animals, sea creatures and vehicles to explore concepts of sinking and floating. They have been expanding their knowledge of what is heavy and what is light. Together, the Preschool children have engaged in a range of water play activities including using a water boat track and using the water tub with a variety of containers for tipping and pouring.

REMINDERS

- Tissues are something that we go through extremely quickly at Preschool. If families are able to donate any boxes of tissues we would be very appreciative.
- Please remember to pack a spare pair of clothes as our children enjoy engaging in water/messy play.
- Please don't forget to name your children's belongings such as clothes, hats, lunch boxes and drink bottles.

Thank you so much for all your support. We look forward to supporting your children as they grow, learn and develop their skills at Preschool.

Thank you,

Preschool Team - Tatum, JJ, Jess, Susan, Hayley, Lorraine, Sophie, Jasmine and Martha



Community Notices

Monday	Tuesday	Wednesday	Thursday	Friday
<p>9.30 – 11.00 Baby Playgroup B - 2 John Hartley Children's Centre – Smithfield Plains Contact: Kerry – 0402893775</p> <p>10.00 – 11.45 Nunga Playgroup Kurna Plains Children's Centre Elizabeth South Contact: Thurza – 0428286349 OR Sarah – 0439104355</p> <p>10.00 – 11.30 Community Playgroup Ingle Farm Children's Centre Contact: Naomi – 0408222577 Melanie – 0494759412</p> <p>10.00 – 11.15 Baby playgroup pre and emerging movers Elizabeth Grove Children's Centre Contact: Tricia – 0402893773</p>	<p>9.30 – 11.00 Community Playgroup Parafield Gardens Children's Centre Contact: Kerry – 0402893775</p>  <p>9.30 – 11.00 Community Playgroup Lake Windemere Children's Centre Salisbury North Contact: Melanie – 0494759412 Darelle – 0427242387</p> <p>9.30 – 11.00 Community Playgroup Craigmore Primary Craigmore Shopping Centre (Building behind the pizza shop) Contact: Lesley – 0409631775</p>	<p>9.30 – 11.00 Community Playgroup Mark Oliphant Children's Centre Munno Para Contact: Darelle – 0427242387 Christie – 0434 856 904 Christie.button@sa.gov.au</p> <p>9.30 – 11.00 Community B-4 yrs Playgroup Riverbanks College B-12 Angle Vale. Contact: Julie – 0417138870 Lauren – 82862900</p> 	<p>9.30 – 11.00 Community Playgroup Northern Adelaide Senior College Elizabeth Contact: Darelle – 0427242387</p>  <p>9.30 – 11.00 Community Playgroup Craigmore Primary Craigmore Shopping Centre (Building behind the pizza shop) Contact: Tricia – 0402893773</p>	<p>9.30 – 11.00 Community Playgroup Clare Valley Town Hall Contact: Sandy – 0457928168</p> <p>10.00 – 11.30 Community Playgroup Dorothy Hughes Kindergarten Salisbury North Contact: Thurza – 0428286349 OR Tricia – 0402893773</p> <p>9.30 – 11.00 Community Playgroup Manor Farm Kindergarten Contact: Kerry – 0402893775 Sharka – 8258 8596</p> <p>9.30 – 11.00 Community Playgroup Munno Para Kindergarten Contact: Melanie – 0484759412 Rebecca – 0438186633</p>

1 of 3

Learning Together Flyers and program overview updated 15/2/2024

<p>1.00- 2.00 Baby Playgroup pre & emerging movers Ingle Farm Children's Centre Contact: Naomi – 0408222577 Ela – 8260 3511</p>  <p>1.00 - 2.30 Community Playgroup Elizabeth Grove Children's Centre Contact: Lesley – 0409631775 Tricia – 0402893773</p>	<p>9.30 – 11.30 Bringing Up Great Kids BOOKINGS ESSENTIAL Midway Community House 48 Midway Rd Elizabeth East 6 Weeks Starts 20 February 2024 FREE crèche Contact: Annette – 8255 4352 OR Sarah – 0439104355</p>  <p>1.00 – 2.00 Baby Playgroup pre & emerging movers Parafield Gardens Children's Centre Contact: Kerry – 0402893775</p>	<p>10.30 – 12.00 Circle of Security Parenting BOOKINGS ESSENTIAL Family Day Care Office Langford Drive Elizabeth 8 weeks Starts 21 February FREE crèche Contact: Lesley – 0409631775</p>  <p>9.00 – 10.45 Community Playgroup Elizabeth Park Primary Contact: Tricia – 0402893773 Helen – 0401074239</p>	<p>9.30 – 11.00 Community Playgroup Elsie Ey Children's Centre Hewett Contact: Melanie 0484759412</p>   <p>10.00 - 11.30 Ngangkita & Wakwaku Baby playgroup 0-3yrs Kurna Plains Children's Centre Contact: Thurza – 0428286349 Megan – 8209 3840</p>	<p>Learning Together playgroups are facilitated by trained early childhood educators.</p> <p>Our focus is on respectful relationships, wellbeing and learning together.</p> <p>We know that interactions and connection between parents/carers and their children are crucial to the child's development. Therefore, we encourage and support these connections & interactions at our playgroups.</p> <p>We also provide opportunities for children to develop in the areas of</p> <ul style="list-style-type: none"> • Literacy & numeracy • Oral language • Dispositions for learning
---	--	---	--	--

2 of 3

Learning Together Flyers and program overview updated 15/2/2024

Community Notices



Government of South Australia
Department for Education

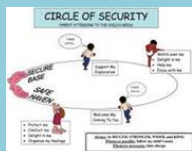
TIMETABLE
Term 1 2024



Northern Adelaide



PLAYGROUPS RETURN
WEEK BEGINNING
5 February 2024



12.45 – 2.45
Bringing Up Great Kids
BOOKINGS ESSENTIAL
Salisbury Primary School
10 Compuda St Salisbury
6 weeks starts 13 February
2024
FREE crèche
Contact:
Sarah Graetz – 8258 1335
Sarah W – 0439104355

1.15 – 3.00
Circle of Security Parenting
BOOKINGS ESSENTIAL
Elizabeth Grove Children's
Centre
8 Weeks starts 13 February
2024
FREE Crèche
Contact: Lesley – 0409631775



Follow us on Facebook for
updates and ideas for
experiences to support you
and your child's learning.

*Learning Together
Communities
Northern Adelaide*



10.30 – 12.00
Community Playgroup
Port Wakefield
Kindergarten
Contact:
Sarah - 0439104355



1.00 – 2.00
**Baby playgroup pre &
emerging movers**
Elsie Ey Children's Centre
Hewett
Contact:
Melanie – 0484759412

****Early Years SA app****

The Early Years SA app – your
go-to for trustworthy
information about child health,
learning, development and
wellbeing.

✦
Using the Early Years SA app
you can:
✦ Record your child's growth.
✦ Filter information to what you
need based on your child's age.
✦ Enable notifications to get
reminders about development
checks.

The Early Years SA app makes
tracking your child's growth,
understanding their
development, and keeping up
with timelines for checks easy.

Download the app via the App
Store or Google Play Store and
parent like you know it.

<https://www.education.sa.gov.au/early-years-app>

3 of 3

Learning Together Flyers and program overview updated 15/2/2024

APRIL SCHOOL HOLIDAYS

ANY ENQUIRES CALL 8480 0100 OR EMAIL JMC@PLAYFORD.SA.GOV.AU

MON 15 APRIL
9AM - 12.30PM
BASKETBALL CAMP
(UNDER 10S & U12S)
Structured basketball coaching & games with experienced SA Church Basketball coaches.
Book via sachurchbasketball.com.au

TUES 16 APRIL
9AM - 12.30PM
BASKETBALL CAMP
(UNDER 14S & U16S)
Structured basketball coaching & games with experienced SA Church Basketball coaches.
Book via sachurchbasketball.com.au

TUES 16 OR MON 22 APRIL
11AM-1PM
BRIXPO EXTRAVAGANZA
(AGES 5-12YRS)
Come build with us this school holidays! Whether you are a Lego enthusiast or simply love to build this program is for you!

MON 22 APRIL
2-3PM
COME N TRY FOOTBALL
(AGES 5 - 17YRS)
Join us for a kick and come n try football with the Smithfield Sports and Social Club

TUES 23 APRIL
9.30-11.30AM
NATURE CONNECT
(ALL AGES)
Learn about the local nature in your own backyard on this engaging nature walk & art activity with Nature Play SA. Meet at the Playground.

WED 24 APRIL
10.30AM - 12.30PM
PEDAL PICNIC [AT] MAYFAIR
(AGES 13 & UNDER)
Join us for some fun in the sun! We will bring games, balls and more! Have a picnic or bring your bike/scooter and have a ride at the safety park.

FEES APPLY
JMC

FEES APPLY
JMC

FREE
JMC

FREE
STERONHEATH PARK

SCAN HERE TO BOOK VIA EVENTBRITE

PLAYFORD DISTRICT SAPSASA

BOYS AUS RULES FOOTY TRIALS

YEAR 5 & YEAR 6

OPEN TO BOYS PLAYING COMPETITIVE SCHOOL OR CLUB LEVEL FOOTBALL AND ENROLLED AT AFFILIATED SCHOOLS IN THE PLAYFORD SAPSASA ZONE

SEE YOUR SAPSASA REP OR P.E. TEACHER FOR DETAILS

