



Swallowcliffe P-6

Be Safe, Be Kind, Work Hard



Welcome to our Newsletter

Term 1, Week 3 2024

Pictured: B7R1 class work regarding uniforms



Diary Dates

Week 4

Monday 19/2 - Acquaintance
Afternoon 2:30-3:15pm / Governing Council AGM 3:15-3:45pm

Week 7

Monday 11/3 - Public Holiday (Adelaide Cup Day)

Week 8

Monday 18/3 – Friday 22/3 - Parent Teacher Interviews

Week 9

Tuesday 26/3 & Wednesday 27/3 - U8's Aboriginal Hearing Health Program
Thursday 28/3 - Pupil Free Day
Friday 29/3 - Public Holiday (Good Friday)

Week 10

Monday 1/4 - Public Holiday (Easter Monday)
Thursday 4/4 - Primary PE Fun Day
Friday 5/4 - JP PE Fun Day

Week 11

Wednesday 9/4 - EID Celebrations
Friday 12/4 - Last day of Term 1 (Early dismissal 2:00pm)

Key Contacts

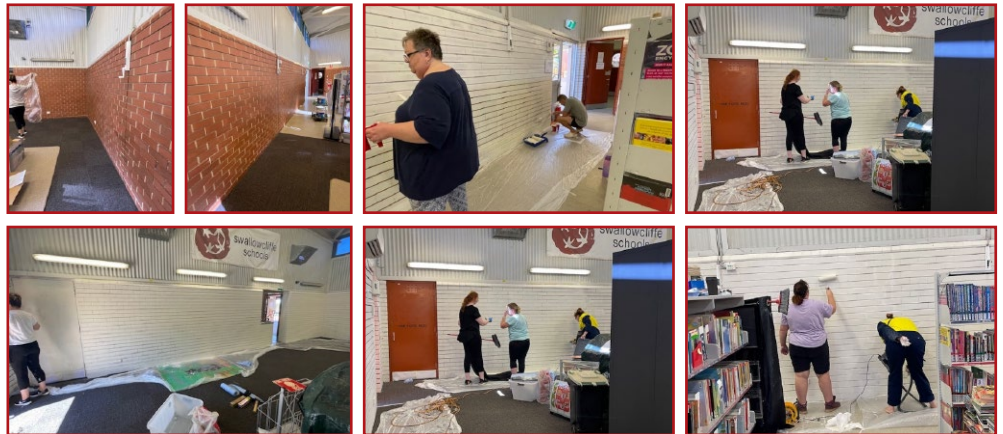
Penny Sweeney	Principal P-6
Eleanor Rawson	Deputy Principal
Erica Goodfellow	Co-ordinator
Dominic Stevens	Senior Leader
Elly Currin	Senior Leader
Kylie Holmes	Co-ordinator
Sarah Browning	Lead Teacher, Pre-School

Principal's Message

Welcome to the new school year. Staff are excited to be back and eager to start building relationships with new students.

During the first two weeks, classes have undertaken our "Getting Ready For Learning Program". Students have been learning about boundaries within the school, setting class expectations, orientation visits, learning to work in class teams, building relationships and many more school ready skills.

During the holidays a group of teachers along with volunteers from the Elizabeth Playford Lions Club painted the school library. Thank you to Donna-Marie Currey, Shannon Learmond, Megan Butler and Swallowcliffe staff. Thank you also to Emily D'Antini who sourced the paint, donated by Wattle Paints at Modbury. We are currently still setting the library up.



Acquaintance Afternoon is Monday 19th February 2:30pm

The School Acquaintance Afternoon will be from 2:30pm – 3:15pm on Monday 19th February. Classes will be open from 2:30pm. You can collect your child from their class on that day to meet their teacher and look at their classroom.

This will be followed by the AGM (Annual General Meeting) at 3:15pm. All parents are invited to come along to hear about the school and school visions, expectations and meeting of key staff.

For those parents on Governing Council, Governing Council will then meet straight after the AGM.

(continued over)

Swallowcliffe P-6 is committed to providing Quality Education.

Our Mission: To empower students to recognise and optimise their full learning potential through explicit teaching of;

- ✓ High Expectations
- ✓ Positive & Growth Mindset
- ✓ Relationships with Others



Government of South Australia
Department for Education

Principal: Penny Sweeney • Swallowcliffe Road, Davoren Park SA 5113
Ph: 8255 2908 • Fax: 8287 0559 • E: dl.1062.info@schools.sa.edu.au



www.swallowc7.sa.edu.au

Principal's Message (continued)

Pupil Free Days and School Closure Days for 2024

- TERM 1 WEEK 9 – THURSDAY 28/3/24
- TERM 2 WEEK 6 – FRIDAY 7/6/24
- TERM 3 WEEK 7 – FRIDAY 6/9/24
- TERM 4 WEEK 3 – MONDAY 28/10/24

Penny Sweeney, Principal



Did you move or change phone number?

Parents are asked to keep the school up to date with contact details, changes of address and telephone numbers, any changes in a student's medical condition, and any change to the student's family situation.

In order for staff to care for your child, it is important we have current details of all contact numbers for parents/caregivers and an emergency contact if parents are unable to be contacted. We also require current information on any medical conditions.



Thank you

A huge thank you to **Rebecca Cole** for the massive donation of Easter goodies for our 2024 Easter Raffle.



Finance

2024 School Card

Eligibility for School Card Assistance is dependent upon the combined family gross income for the 2022/2023 financial year being within the following School Card limits:

Number of Dependant Children	Gross Annual School Card Income Limit	Gross Weekly School Card Income Limit
1 child	\$70,994	\$1,365
2 children	\$72,262	\$1,390
3 children	\$73,530	\$1,414
4 children	\$74,798	\$1,439
5 children	\$76,066	\$1,463
more than 5 children	Add \$1,268 for each dependent child	Add \$25 for each dependent child

School Card does not roll over year after year; you are required to apply each school year. If eligible for School Card the entire 2024 M&S charge of \$262.00 will be paid and a further \$25.00 can be accessed to purchase uniforms or pay for excursions in 2024.

Forms are available from the front office or you can apply online at www.sa.gov.au/education/schoolcard

Charlene Warrington
Business Manager

HIPPY

Parent Education TERM 1



Smith Family
WK2 Friday
9th February
10.30am-11.30am

Sunny Spectrum
WK4 Tuesday
20th February
10.30am-11.30am

Volunteer Checks
WK6 Tuesday
5th March
10.30am-11.30am

**Cyber Safety
DHS**
WK8 Tuesday
19th March
10.30am-1.00pm

Nature Play

WK10 Friday
5th April
10.30am-11.30am

Bookings Essential!

For Further Information or to Register your Interest.

Please Phone HIPPY on M: 0412661208

Address: NOVITA HIPPY

Shop 5/45 Peachey Road, Davoren Park.SA.5113

APPLYING FOR A SCHOOL CARD



All types of School Card applications are now online.

You can access the online forms from any device that gets internet, including mobile devices, such as tablets and smart phones, as well as laptops and computers.

Applying online is easy! Simply follow the steps below.

- STEP 1** Visit sa.gov.au/education/schoolcard
- STEP 2** Select the type of School Card you would like to apply for (for example "Type A") and follow the prompts.
- STEP 3** Complete all mandatory fields.
Please note: you cannot submit your application unless all mandatory fields are complete.
- STEP 4** Once you have completed a page click on the 'NEXT' button.
- STEP 5** Once you have filled out all pages click the 'SUBMIT' button.
Please note: if you exit the form without clicking 'SUBMIT' your details will be lost.

You can save the form, and return to complete it at another time, by clicking on the 'SAVE' button.



sa.gov.au/education/schoolcard



Design and Technology

Welcome to Design and Technology 2024!

There are huge, exciting changes going on this year - the biggest since Design and Technology became its own specialist subject at Swallowcliffe! Now, instead of each class getting two terms of lessons... almost every class is getting a whole year!

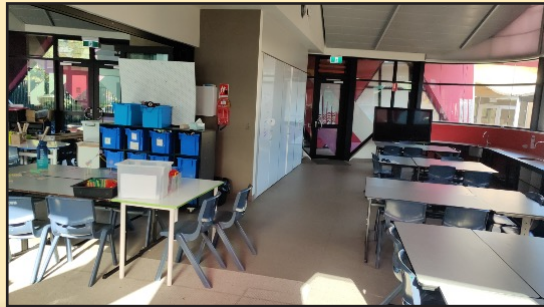
To facilitate this, we now have two teachers working together to pass on our knowledge - both Mrs Quinn and Mr Seal. More than that, instead of just teaching separately, we have opened up the doors in the Pod and have created a huge, wonderful working space for both classes to learn together in. I'm no real estate agent, so the pictures do not really do it justice - it feels amazing to be in there. So far it seems to be working really well, and we are hopeful we will be able to continue teaching in this way!

Term 1 is going to be primarily based around design and construction, dependent on year level, with the younger students focusing on the basic skills and the older students learning the ideas behind engineering and how it can help them plan and problem solve. With the extra time we have we can really make sure we learn our skills properly, rather than rushing to create before the end of the term.

I truly hope that the students enjoy our new working area as much as I do.

Take care!

Mr Seal (and Mrs Quinn)



Child Protection Curriculum

Keeping Safe:
Child Protection
Curriculum

KS: CPC



Keeping Safe: Child Protection Curriculum

EY - Y6 + Disability and additional needs

Miss Nicola will be teaching the Child Protection Curriculum across most of the R-6 classes in 2024.

Term 1 focus is on The Right to be safe.

Focus Areas

1. Feelings
2. Being safe
3. Warning signs
4. Pressure and manipulation



Swallowcliffe School



Everybody has the right to feel safe at all times!

In the first two weeks of school we were focusing on how we wanted to feel at school this year. We decorated the covers of our book with some awesome feelings and pictures of ourselves doing awesome things!



Pre-School News

Dear Pre-School families,

We would like to take this opportunity to formally welcome you and your children to Swallowcliffe Pre-School. This is such an exciting time for all families, as your children transition into a brand new, stimulating learning environment.

Pre-School is extremely important for the learning and development of all children. It provides children with the opportunity to explore, build relationships with peers and educators, gain an individual identity and sense of self, and build on their self-confidence. Being exposed to a variety of different learning opportunities each day, they are able to independently accomplish tasks, make decisions and become ready for learning, preparing them for their following years of primary school. In the Pre-School, we aim to do this by providing various opportunities for literacy and numeracy learning, communication and social interactions, as well as helping children build their independence and self-help skills. This is done by encouraging them to wash their own hands and faces, apply their own sunscreen, and pack away their inside and outside resources after play.

Throughout our first weeks of the 2024 school year, it has been great to see the way the children have settled in, and begun to form special friendships with different teachers and peers.

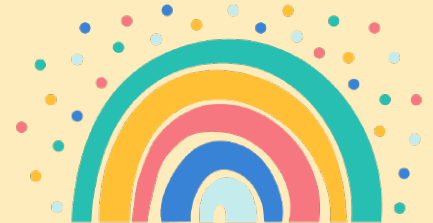
In order to assist us in ensuring the best for all children at Pre-School, we have a few reminders for our families:

- With a large amount of students in the Pre-School each week, belongings can often become lost, misplaced or mixed up among families. To avoid this, please label ALL belongings including hats, shoes, socks, clothes, bags and lunchboxes. Hats left behind each day will also be placed in the hat boxes and pockets - please look here for your child's hat before asking an educator.
- One of our most anticipated activities in the Pre-School is the 'Kids in the Kitchen' cooking program. This program is run each week and encourages the children in building their awareness of fresh and healthy produce, as well as different ways of cooking. Our cooking program is run entirely on donations from our Pre-School families. Please see one of the teachers if you would like to donate to this program.
- Water and messy play is a big hit in the Pre-School, so please remember to pack spare clothes in your child/ren's bag.
- We would appreciate all families to assist their children to put sunscreen on their faces, arms, legs and necks at drop off time each day. Pre-School staff will then continue to reapply this every 2 hours.

Thank you all for your support so far, we look forward to spending more time with your children as they continue to grow, learn and develop new skills and interests in Swallowcliffe Pre-School.

Thanks,

Pre-School Team - Tatum, JJ, Jess, Susan, Hayley, Lorraine, Sophie, Jasmine and Martha



Community Notices

HEALTHY FOOD CO.

THE PRECINCT
112 Coventry Road
Smithfield Plains

The Healthy Food Co. provides low-cost nutritional food products and grocery items to the whole community at reasonable prices. We are a volunteer run service and have been serving our community since 1996. We offer Easy Meal kits that feed a family of 4 for under \$15.00 per kit. We are open to everyone and have no requirement for entry.

Healthy Food Co at Playford

The Smithfield Healthy Food Co. Shop is also home to The Precinct Cafe where our volunteers serve up delicious coffee, cake and lunches!

Healthy Food Co. - The Precinct
112 Coventry Road,
Smithfield Plains, SA 5114
Ph: 8254 3641

Opening Hours:
Mon 9.30am - 3pm
Tues - Fri
9.30am to 4.30pm
After hours collection of Easy Meal orders available from John McVeity Centre.

CHSP PLAYFORD NORTH PROGRAMS

Fun and engaging activities such as music, arts and crafts, cooking, guest speakers, regular outings in the community as well as making a whole bunch of new friends!

Programs based at John McVeity Centre
Kookaburra Group | Wednesdays, 9am - 2pm
MALPA Group | Thursdays, 9am - 2pm

Eligibility: CHSP Social support group referral with My Aged Care - Priority to residents living in the City of Playford.

Contact:
Louise Rinaldi | Greenville Hub - Outreach Program Coordinator
8256 0305 | lrinaldi@playford.sa.gov.au

\$3 Per cart

Playford Friends Group Greeting Cards

\$10 5 pack

Playford Friends Group Greeting Cards

VENUE HIRE

PLAYFORD WELLBEING HUB

JOHN MCVEITY CENTRE
Room and court hire available 7 days a week. Spaces available for celebrations, workshops, meetings, court sports and more!

FUNCTION ROOMS

- MEETING ROOM
- COURTS
- SOFT PLAY

FOR BOOKINGS & ENQUIRIES CONTACT
jmc@playford.sa.gov.au | 8480 0100

THE PRECINCT
Spaces available Monday - Friday for meetings, training sessions, workshops and more!

MAKERSPACE

PODS

FOR BOOKINGS & ENQUIRIES CONTACT
m@theprecinctsa.gov.au | 8256 0272

Located at The Precinct

LUTHERAN CARE OP SHOP
Located at The Precinct
OPEN Monday - Friday 9am - 4pm

Men's Shed

This Shed is open for men to come and access information on heart disease with the City of Playford as well as joining up and participating in the shed and accompanying work programs.

For more information contact 0480 143 584 | playforms@gmail.com
https://playforms.menshed.org.au

Beyond Barriers Australia
For more information contact 08 833 0200 | info@beyondbarriers.com.au
www.beyondbarriersaustralia.com.au

Recovery 4 Life
For more information contact Michelle 8252 13 008 | michelle@recovery4life.com.au
recovery4life.com.au

HYPE
For more information contact 08 833 0200 | info@hypesportservices.com.au
www.hypesportservices.com.au

Located at John McVeity Centre

First Step Solutions
Munno Para Office: Located at John McVeity Centre
Phone: 1800 577 370
Email: admin@firststep.com.au

novita
Novita provides rehabilitation, therapy, early intervention, community education, assistive technology and disability services to people living with disability, as well as support for their families and carers.
Novita Group Room & Gym is located within John McVeity Centre.
For more information call 1300 668 482

PLAYFORD

WELLBEING HUB

TIMETABLE

29th January to 12th April

TERM 1 2024

JOHN MCVEITY CENTRE 182 Peachey Road, Smithfield Plains

THE PRECINCT 112 Coventry Road, Smithfield Plains

CONTACT US 8480 0100 | jmc@playford.sa.gov.au

CITY OF Playford

TERM 1 2024

All programs will operate during Term 1 dates 29th January to 12th April unless otherwise stated.

Follow us on Facebook to keep up to date with the most recent Playford Wellbeing Hub information!

John McVeity Centre **The Precinct**

PLAYFORD WELLBEING HUB

MONDAY

Chatty Cafe @ The Precinct
Most new people over a cuppa in a cosy cafe!
10am - 11am
FEB 5, 12 & 19
Fees apply
Book via Eventbrite

Up & Go Boot Camp with Sue
9:15am - 10:15am
FEB 5, 12 & 19
Group fitness session for 16+ yrs focused on wellbeing, socialising and being active.
Fees apply
No booking required
JOHN MCVEITY CENTRE

Messy Play
10am - 11am
FEB 5, 12 & 19
Join Spectrum OT for messy exploration sessions.
Fees apply
Book via Eventbrite

Sensory Play
10am - 11am
MARCH 18, 25 & APRIL 8
Join Mudd, The Messy Play Co for sensory play sessions.
Fees apply
Book via Eventbrite

KIDS YOGA
MONDAYS TERM 1
10:30am - 11am
FEB 5, 12, 19, 26, 5, 12, 19, 26, 5, 12, 19, 26

TUESDAY

Smithfield Senior Citizens
9am - 1pm
Social club for retirement/retirees citizens aged 65+ yrs.
Fees apply
Contact Sue 0427 472 239
JOHN MCVEITY CENTRE

Maggie Moo Playgroup
9:30am - 10:30am
An interactive music & movement session to support child development whilst having fun!
For ages 0-5 yrs
Fees apply
Book via Eventbrite

Fit & Fab with Di
9:30am - 10:30am
TUESDAY & THURSDAYS
Low impact group fitness session for 18+ yrs to help improve strength, core and flexibility.
No booking required
JOHN MCVEITY CENTRE

INTRO TO HONEY HERBALISM
TUESDAY 10:30am - 12:00pm
THE PRECINCT
BOOK VIA EVENTBRITE | FEES APPLY

Yara Nunga Basketball
3:30pm - 5pm
Hang out with youth mentors, have a yam & shoot hoops.
Fees apply
yaranunga@yaranunga.com.au
JOHN MCVEITY CENTRE

SA Church Basketball
4pm - 8:30pm
Junior & Senior Basketball competition. For ages 8yrs+
Fees apply
sachurchbasketball.com.au
JOHN MCVEITY CENTRE

Fair Dinkum Yoga
7pm - 8pm
TUESDAY & THURSDAYS
Adults only
Fees apply
yogafairdinkum@gmail.com
JOHN MCVEITY CENTRE

WEDNESDAY

BITE & BANTER
5:30am - 6:30am
A social breakfast for 18+ yrs.
Fees apply
Book via Eventbrite

Do you live in the Playford area? Are you keen to learn basic car maintenance?
7:30am - 8:30am
Hands on training for 18+ yrs.
Fees apply
Book via Eventbrite

Just Kicks Taekwondo
MONDAY & WEDNESDAYS
5:15 - 5:55pm (4-7yrs)
6:05 - 7:05pm (8-14yrs)
7:15 - 8:15pm (15yrs+)
Fees apply
justkicks@justkicks.com.au
JOHN MCVEITY CENTRE

Senior Social Futsal
6:30pm - 9pm
Weekly games
For ages 18+ yrs
Fees apply
seniorsocial@seniorsocial.com.au
JOHN MCVEITY CENTRE

FLEXI FITNESS
Wednesdays
6:45pm | 45 minutes
Fees apply
No booking required
JOHN MCVEITY CENTRE

THURSDAY

Tree Tots
10:30am - 11:30am
Storytime in the garden reading & nature based play & crafts.
For ages 2-5yrs
Book via Playford Library
THE PRECINCT

Tai Chi with Nazli
11am - 12pm
Improve your flexibility, strength and overall physical & mental wellbeing in a comfortable and friendly environment.
For 18yrs.
Fees apply
No booking required
JOHN MCVEITY CENTRE

Immunisation Clinic
3pm - 7pm
Bookings via VaxApp
playfordbook.vaxapp.com.au
JOHN MCVEITY CENTRE

Playing for All
4-5pm
Games based program for children with an intellectual disability, autism & those with other disabilities.
For ages 6-13yrs
Fees apply
Book here: 8475140458
JOHN MCVEITY CENTRE

Cirkidz Satellite
4:5pm - 5:6pm
Circus Skills (5-12yrs) & Parkour (8-12yrs)
Two sessions available
Fees apply
cirkidz.com.au
JOHN MCVEITY CENTRE

Special Olympics Basketball
5:6pm & 6:7pm
A sport & health program for children & adults with intellectual disabilities & autism.
Fees apply
yogafairdinkum@gmail.com
JOHN MCVEITY CENTRE

Fair Dinkum Yoga
7pm - 8pm
TUESDAY & THURSDAYS
Adults only
Fees apply
yogafairdinkum@gmail.com
JOHN MCVEITY CENTRE

FRIDAY

Up & Go Boxercise with Sue
9:15am - 10:15am
Group fitness session for 16+ yrs focused on wellbeing, socialising and being active.
Fees apply
No booking required
JOHN MCVEITY CENTRE

Play Gym
9:30am - 10:30am
For ages 6 months - 6yrs & their parent/guardian.
A play session to explore fine & gross motor skills.
Fees apply
No booking required
JOHN MCVEITY CENTRE

Stay in the loop with the Playford Wellbeing Hub!
Have your email added to our community news lists to get updates on all the things you should know about in your suburb!
Book here: 8475140458
JOHN MCVEITY CENTRE

Community Garden Catch Up
9:30am - 11:30am
Do you like working with your hands & don't mind getting dirty? Join us!
All community welcome
Contact Nat on 8256 0322
THE PRECINCT

Queenstown Trampoline Gymnastics
5pm - 9pm
MONDAYS & FRIDAYS
Weekly training sessions
Fees apply
queenstowntrampolinesgymnastics@gmail.com
JOHN MCVEITY CENTRE

SATURDAY

AA Davoren Park Meetings
12pm - 1:30pm
Contact Marion or Fin 0437 666 555
JOHN MCVEITY CENTRE

Queenstown Trampoline Gymnastics
9am - 1pm
Weekly training sessions
Fees apply
queenstowntrampolinesgymnastics@gmail.com
JOHN MCVEITY CENTRE

AA Davoren Park Meetings
12pm - 1:30pm
Contact Marion or Fin 0437 666 555
JOHN MCVEITY CENTRE

\$5.00 CASUAL GOLF ACCESS
Book your tee time at the 18-hole golf course at the Playford Wellbeing Hub.
Book here: 8475140458
JOHN MCVEITY CENTRE

FAMILY FUN NIGHT
5 - 7:30pm | Friday 22nd March

Volunteers Wanted for Play Gym

Womens Social Netball
6:30pm - 8:30pm
For ages 16+ yrs
Weekly games
JOHN MCVEITY CENTRE

FREE COMMUNITY FITNESS
at John McVeity Centre

MONDAY 5:30pm 45 mins CROSS FIT FREE	TUESDAY 5:30pm 45 mins ACTIVE BOXING FREE	WEDNESDAY 5:30pm 45 mins CROSS FIT FREE	THURSDAY 5:30pm 45 mins CORE YOGA FREE	FRIDAY 5:30pm 45 mins ACTIVE BOXING FREE
---	--	--	---	---

No memberships or bookings required. Simply, check in at front desk for each session.

BOOK VIA eventbrite

All programs requiring bookings via Eventbrite will open for registrations 2-3 weeks before sessions start. Follow our Eventbrite page to be notified of new events!
playfordwellbeinghub.eventbrite.com.au

The Playford Wellbeing Hub offers a range of programs and services to support community physical, social and mental health and wellbeing.
For more information contact JMC on 8480 0100 or email jmc@playford.sa.gov.au